

# Alead

**BTMIC2  
BLUETOOTH  
WIRELESS MICROPHONE  
P/N AMBM5C2XXX  
USER GUIDE**



**Declaration of Conformity.** We declare that product AMBM5C2XXX conforms to the R&TTE Directive 1999/5/RC.

FCC ID:TNZNSRX3C2XXX

**CE 0678**

## INTRODUCTION

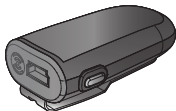
The Bluetooth Wireless Microphone allows capturing the source of audio wirelessly and freely. Users can listen, capture or record the audio/voice of subject with clarity sound from Bluetooth wireless microphone.



Compatible stereo Bluetooth devices must support the Bluetooth profiles known as A2DP, Headset and Handfree profiles.

## GETTING STARTED

Unpack the package carefully and confirm that you have all of parts as shown below.



Microphone



USB charging cable

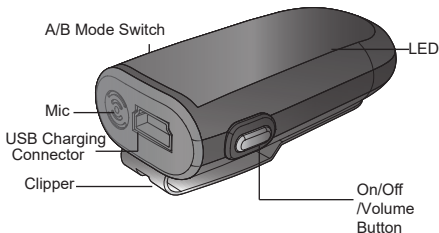


QSG

Please check the contents carefully and contact your local dealer immediately if anything is missing or damaged.

## PRODUCT OVERVIEW

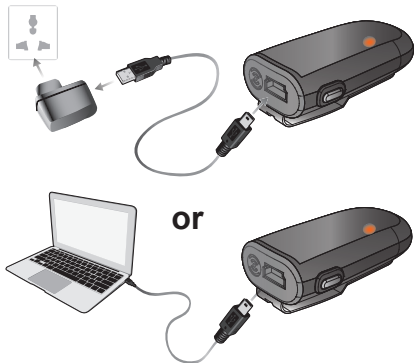
See image below. Please note some models of microphone will differ slightly in style, colour and the functionality may be vary according to their specifications.



## CHARGING

Before using the microphone, you must charge it for approximately 2 hours. After fully charged, it can provide up to 6 hours of playing time and 100 hours of standby time.

Plug the USB charging cable into microphone mini USB connector. Plug the other side of the USB charging cable into a powered USB connector.



When charging, the **amber LED** will be lighted. When charging is completed, the **amber LED** will be turn off or dim.

## TURN ON AND PAIRING

- **Type A and Type B pairing modes supporting:**

Microphone can work with 2 different types of devices.

Type A: Audio receivers, speakers, PA systems and headphones

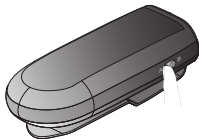
Type B: iPhones, iPads, android phones, smartphones, tablets, PC, laptop and Mac. Those will indicate with different LED lighting during pairing. Please ensure you are using correct pairing type with your devices and applications

- **Switch to desired Type A or Type B mode**

Select the type A or type B mode by slide A/B mode switch before turn on Microphone



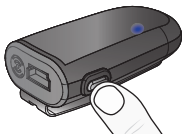
Type A mode



Type B mode

## ● Turn on your Microphone into pairing mode

Press and hold the ON/OFF button about 2 seconds, the **blue LED** will solid light for about 1 second,



then release the button. Microphone will be turned on and enter current type A or B pairing mode automatically. Each pairing mode has different LED indication, please ensure you are in correct pairing mode during the pairing.

Type A pairing mode: **blue LED** flashes along.

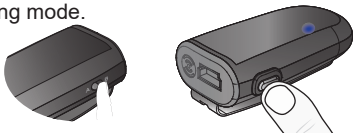


Type B pairing mode: **blue** and **amber** LED flash alternatively.



- **Type A: To pair with an A2DP enabled Bluetooth audio receivers, speakers, PA systems, hearing aid or headphones**

1. Turn on the Microphone and into type A pairing mode.



2. After the Microphone is in pairing mode, initiate pairing feature on the audio receiver. Refer to your audio receiver's User Guide.

3. The audio receiver should find the Microphone and pair with it. When both devices paired and connected, the **blue LED** on Microphone will change to flash slowly.

✂ Important Note: Microphone supports four sets of pin code: 0000, 1111, 1234, and 8888. It covers the popular speakers, receivers and headphones.

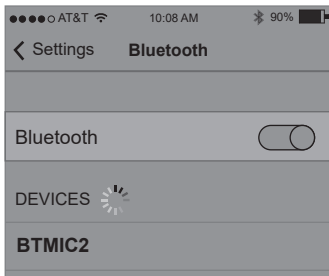
- **Type B:** To pair with iPhones, iPads, tablets, android phones, smartphones, laptop, Mac and PCs...etc

Turn on the Microphone and into type B pairing mode.



### **For iPhone/iPad/Smartphone**

1. Initiate Bluetooth search feature and find the device name “BTMIC2”. If pin code requested during pairing, please submit the pin code 0000.





2. Using suitable apps with Bluetooth microphone supporting. You can find related apps on App Store or internet. The built-in apps such as Voice Memos and Camera on the iPhone/iPad/Android smartphone/Galaxy Note only support their own internal microphone.

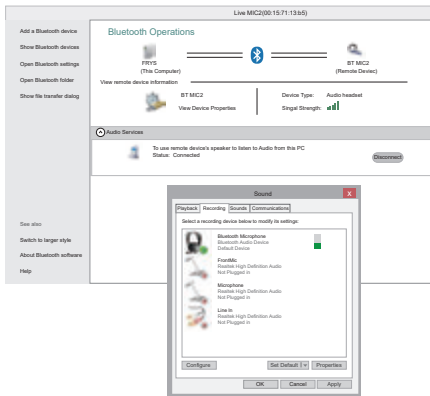
### **For Laptop, Mac and PC**

1. Clip bluetooth “add new Device”, select “BTMIC2” and pair/connect, If pin code requested during pairing, please submit the 0000 pin code.

※ Please ensure the Bluetooth driver supports headset/handfree profile.

Normally, the Bluetooth driver come with Bluetooth hardware either PC or dongle. The laptop/PC will install headset/handfree profile during pairing stage automatically. If the bluetooth driver does not have it, please download or get it from your Bluetooth hardware supplier.

2. Select BTMIC2 as your default audio input device at “Sound” under Control Panel.



## TURN OFF

Press and hold the ON/OFF button about 2 seconds, the **amber LED** will stay on for about 1 second and then the Microphone will turn off. Release the ON/OFF button.



## **Auto-reconnect to the Microphone**

Once Microphone is paired with your Bluetooth device, you just need to turn on the Microphone and your Bluetooth device in the later using, and they will connect to each other automatically. If they were failed to connect due to any reason, please repeat the pair/connect procedure again.

## **MICROPHONE WORKING**

After Microphone is paired and connected with your Bluetooth device, Microphone will start to work.

At type A mode, Microphone will start to transmit the microphone sound to the receiver.

At type B mode, Microphone will work with suitable apps with Bluetooth microphone supporting.

## **ADJUSTING AUDIO VOLUME**

At the type A mode, you can adjust the microphone audio volume by press the button.

### **To increase the audio volume**

While talking, click the ON/OFF button once to increase the volume by one step. Repeat this procedure until you reach the desired level.

### **To decrease the audio volume**

While talking, quick click the ON/OFF button two times continuously to decrease the volume by one step. Repeat this procedure until you reach the desired level

## **Reduce audio delay with FastStream**

Bluetooth audio transmission will always cause a little audio delay, it may cause the audio echo or delay effect when listen the voice in real time environment.

The Microphone supports low latency audio with FastStream. To achieve the low audio lag/delay, the receivers/speakers need to support audio FastStream, too.

## VISUAL INDICATION

The POWER/MODE/ LED can also indicate the status of microphone working statues.

Statues	Indication
Charging	amber LED is On
Not Connected	Low speed flash, approx. every 5 seconds
Connected	Medium speed flash, approx. every 2 seconds
Pairing mode with audio receiver	blue LED flashes alone after power on
Pairing mode with iPhones, iPads, Smarphones, Note-books, PCs..etc	amber and blue LEDs flash alternatively after power on
Power On	blue LED long time on
Power Off	amber LED long time on

## TROUBLESHOOTING

Please note that you should also be familiar with the operation of your audio receiver, mobile phone or other connecting Bluetooth device. Please read the User Guide for your device carefully. For operation with a PC or laptop please note that these devices should also be Bluetooth enabled with appropriate Bluetooth profiles in order to enable correct operation.

Problem	Likely Cause / Solution
Wireless microphone does not reconnect. Lost Connection. <b>blue LED</b> flashes at 5 second intervals.	Microphone and audio receiver were out of range for more than 30 feet. Turn both microphone and audio receiver off and turn on again to reconnect.
Wireless microphone will not pair with audio receiver	Ensure the audio receiver's PIN code is one of these codes: 0000, 1111, 1234, 8888

<b>Problem</b>	<b>Likely Cause / Solution</b>
No sound capture on laptop, Mac and PC	Ensure have handfree or handset profiles installed, supported on your Bluetooth driver in your laptop, PC
No sound recorded on iPhone, iPad, smartphone, Tablet	Ensure your voice/video recording apps support Bluetooth microphone
Cannot pair with Bluetooth speaker, receiver	Ensure you are using Type A pairing mode with blue light flashing along
Cannot pair with iPhone, iPad, Mac, PC...etc	Ensure you are using Type B pairing mode with blue and amber light flashing

### **CUSTOMER SERVICE INFORMATION**

For other Alead Bluetooth products or support, please view our website – [www.aleadinc.com](http://www.aleadinc.com) or email [info@aleadinc.com](mailto:info@aleadinc.com) or contact your local representative.

## **DISCLAIMER**

Whilst every effort has been made to ensure that the information in this manual is accurate and complete, no liability will be accepted for any errors and/or omissions made. The manufacturer reserves the right to make changes and improvements to the specifications and features of the hardware and firmware of the products described in this document without prior notice. Reproduction, transfer, distribution or storage of part or all of the contents in this document in any form is prohibited without prior permission of the manufacturer. All trademarks acknowledged.

## **ENVIRONMENT**

Do not throw this electrical device away with the normal household waste at the end of its life, but hand it in at an official collection point for recycling. By doing this you will help to preserve the environment.

