

## SPECIFICATIONS

		55LV77A/55LV75A	
PANEL	Screen Size	55" (54.64" measured diagonal)	
	Panel Technology	IPS	
	Aspect Ratio	16 : 9	
	Native Resolution	1920 x 1080 (FHD)	
	Brightness	700cd/m <sup>2</sup> (LV77A), 500cd/m <sup>2</sup> (LV75A)	
	Contrast Ratio	1,400:1	
	Dynamic CR	500,000 : 1	
	Viewing Angle (H x V)	178 x 178	
	Response Time	12ms t(G to G)	
	Surface Treatment	Hard coating(3H), LV77A : Anti-reflection treatment of the front polarizer (Reflectance <2%) LV75A : Anti-glare treatment of the front polarizer (Haze 10%)	
CONNECTIVITY	Life time	60,000 Hrs	
	Orientation	Portrait & Landscape	
	Input (Rear)	Digital	DVI-D (1), HDMI (1), Display Port (1) with HDCP for input
		Analog	RGB (1), Shared Component (1), AV (1)
		Audio	PC Audio In (1)
		External Control	RS232C (1), RJ45 (1), IR Receiver (1)
		USB	USB (1)
	Output (Rear)	Digital	Display Port(1)
		Audio	Audio Out(1)
		External Control	RS232C(1)
PHYSICAL SPECIFICATION	Color	Black	
	Bezel Width	left/top: 2.25 mm (0.08 inch) / right/bottom : 1.25 mm (0.04 inch)	
	Monitor Dimension (W x H x D)	1213.4 x 684.2 x 88.5 mm (47.7 x 26.9 x 3.48 inch)	
	Weight (Head)	LV77A : 23.2 kg (51.1 lbs) / LV75A : 23 kg (50.7 lbs)	
	Carton Dimensions(W x H x D)	Box outer size : 1353 x 850 x 255 mm (53.2 x 33.4 x 10 inch)	
	Packed Weight	LV77A : 30.5 kg (67.24 lbs) / LV75A : 30.3 kg (66.8 lbs)	
	Handle	Yes	
	VESA™ Standard Mount Interface	600mm x 400mm	
	Temperature Sensor	Yes	
	Cooling FAN	LV77A : Yes / LV75A : No	
SPECIAL FEATURES	Tile Mode	Yes, Up to 15 x 15	
	Natural mode @Tile mode	Yes	
	Source Selection	RGB / DVI-D / HDMI / Component / AV / Display Port / USB	
	Brightness/Contrast/Backlight	Yes	
	Position/Size	Yes	
	Auto Config/Phase	Yes	
	ISM Method	Normal, Orbiter, inversion, White wash	
	Input Label	Yes	
	Auto Power/Source Memory	Yes	
	DPM Select	Yes	
ENVIRONMENT CONDITIONS	Energy Saving	Yes, Off / Minimum / Medium / Maximum / Screen Off	
	Smart Energy Saving	Yes	
	Operation Temperature	0°C - 40°C	
	Operation Humidity	10% - 80%	
POWER	Power Supply	100-240V~, 50/60Hz	
	Power Type	Built-in Power	
	Power Consumption	Typ.	LV77A : 230W / LV75A : 160W
		Smart Energy Saving	LV77A : 130W / LV75A : 90W
DPM		0.7W	
STANDARD (CERTIFICATION)	Power Off	0.5W	
	Safety	UL / cUL / CB / TUV / KC	
	EMC	FCC Class "B" / CE / KCC	
MEDIA PLAYER COMPATIBILITY	ErP / Energy Star	Yes / Yes(Energy Star 6.0)	
	External Media Player Attatchable	Yes	
SOFTWARE COMPATIBILITY	SuperSign-W lite	Yes	
	SuperSign-C	Editing, Scheduling, Distribution & Play, Control	
ACCESSORY	Accessory	Remote Controller, Power Cable, DP Cable, Manual, IR Receiver, RS-232C Cable, Tiling Guide, Screw	
	Optional Accessory	600 x 400 (AP-WX60)	
		WM-L640V(Landscape), WM-P640V(Portrait)	

# 55" Super Narrow Bezel VIDEO WALL DISPLAY LV75A/LV77A

55LV75A/LV77A | 55" CLASS (54.64 inches measured diagonally)



**Super Narrow Bezel 3.5mm**

**Lighter & Thinner Cabinet**  
Weight: 23kg / Depth: 89mm

**Higher Brightness Uniformity 90%**

**Vivid Imagery Viewing**  
TruMotion™ improves Motion Blur and Motion Judder

**DisplayPort 1.2 Daisy-Chain**  
UHD content playback on 4K video-wall in 2 x 2 displays

**Dynamic Video-wall Configuration**  
Video Wall SW to freely configure the layout and content

**Free S/W for Remote Monitor & Control**  
Remotely monitor display status & control

**Features**  
24/7 Operation  
DP1.2 daisy-chain  
Brightness (LV75A: 500nit/LV77A: 700nit)  
Shine-out (available on LV77A)  
Portrait & Landscape Mode

**Interfaces**  
RGB in, HDMI in, DVI in, DP in/out,  
RS232C in/out, RJ45, USB

## DISPLAY

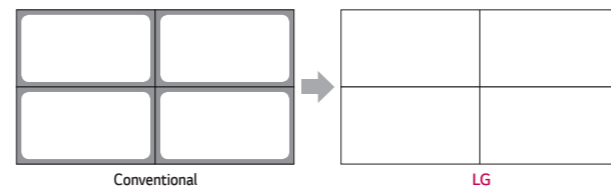
### SUPER NARROW BEZEL

47" super narrow bezel 4.9mm and 55" super narrow bezel 3.5mm video wall displays create visually stunning digital wall that is easily installed, maintained and managed.



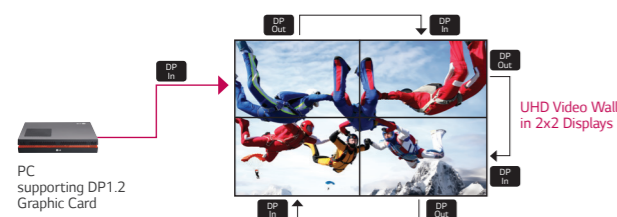
### HIGHER BRIGHTNESS UNIFORMITY

Brightness uniformity 90% ensures high-quality image delivered across displays.



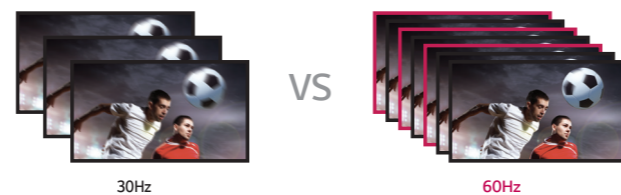
### EVOLVED DAISY-CHAIN PERFORMANCE

DisplayPort 1.2 connectors enable UHD content playback on 4K Video Wall in 2x2 displays. (available on LV75A/LV77A)

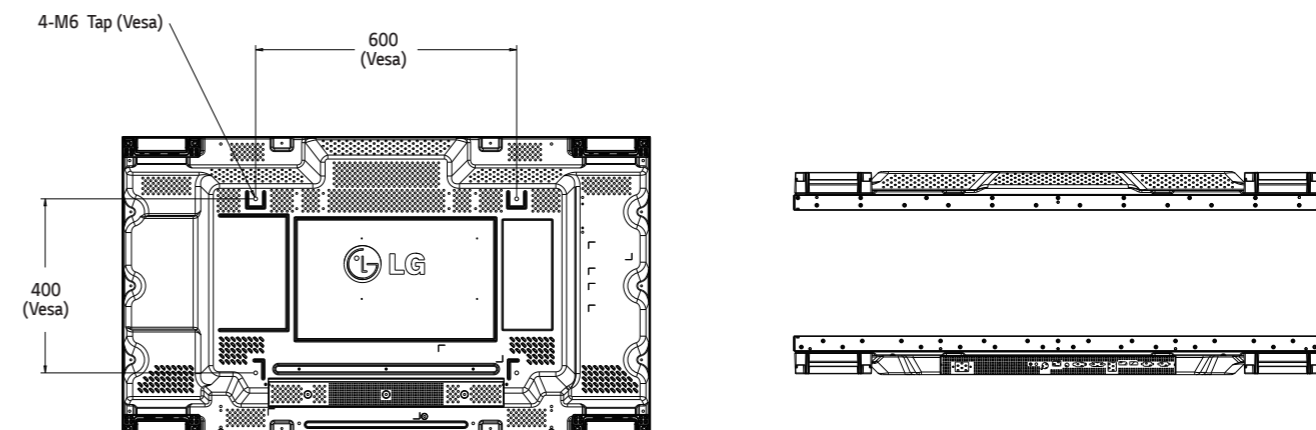
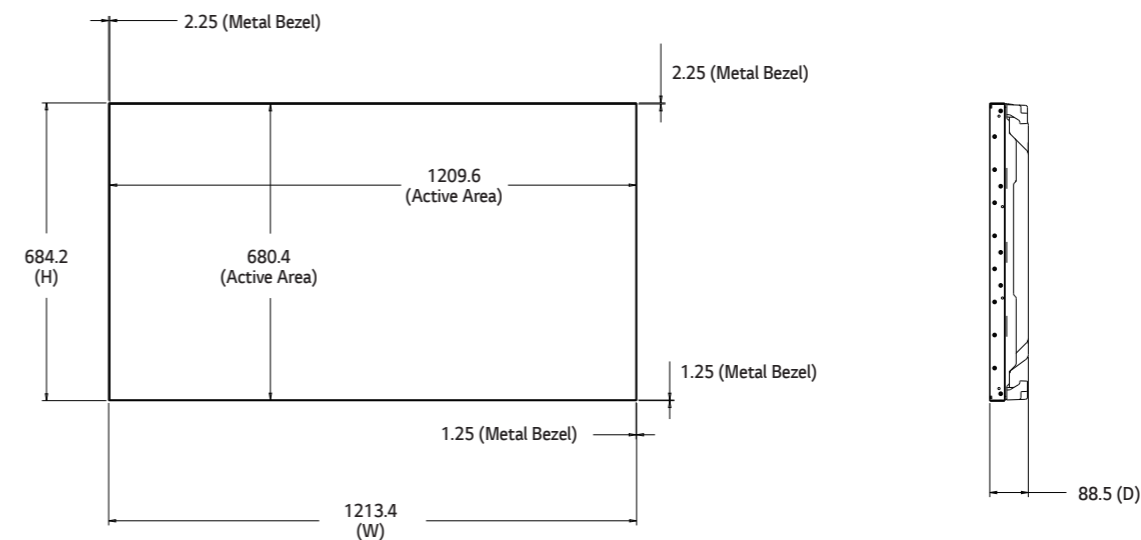


### VIVID IMAGERY VIEWING

TruMotion™ 60Hz Refresh Rate drastically reduces motion blur and judder ensuring vivid image details.



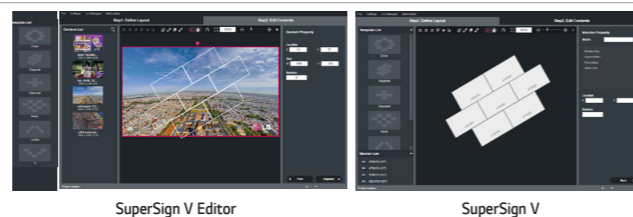
## DIMENSION (unit : mm)



## SOFTWARE

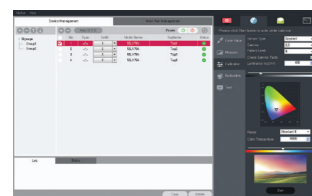
### SUPERSIGN V FOR DYNAMIC LAYOUT

- Use given templates to configure video wall layout easily
- Rotate, cut and edit content according to a defined layout
- Flexible content editing in various layouts is viable
- Scheduled-based content playback based on time and day
- Distribute content to media players as well



### FREE SUPERSIGN C FOR ADVANCED COLOR ADJUSTMENT

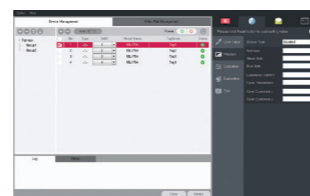
- Intuitive GUI in SuperSign C S/W allows to measure and adjust color and brightness instantly on display
- Automatic white balancing of a video-wall display using a sensor



SuperSign C

### FREE SUPERSIGN C FOR REMOTE MONITOR AND CONTROL

Intuitive GUI-based Remote Monitoring & Control via the networks and RS232 connection feature in SuperSign C S/W.



SuperSign C

## INTERFACE

